

SGE / JJPMER, India
**JAWAHARLAL INSTITUTE OF POSTGRADUATE
MEDICAL EDUCATION AND RESEARCH, PUDUCHERRY –
605006.**

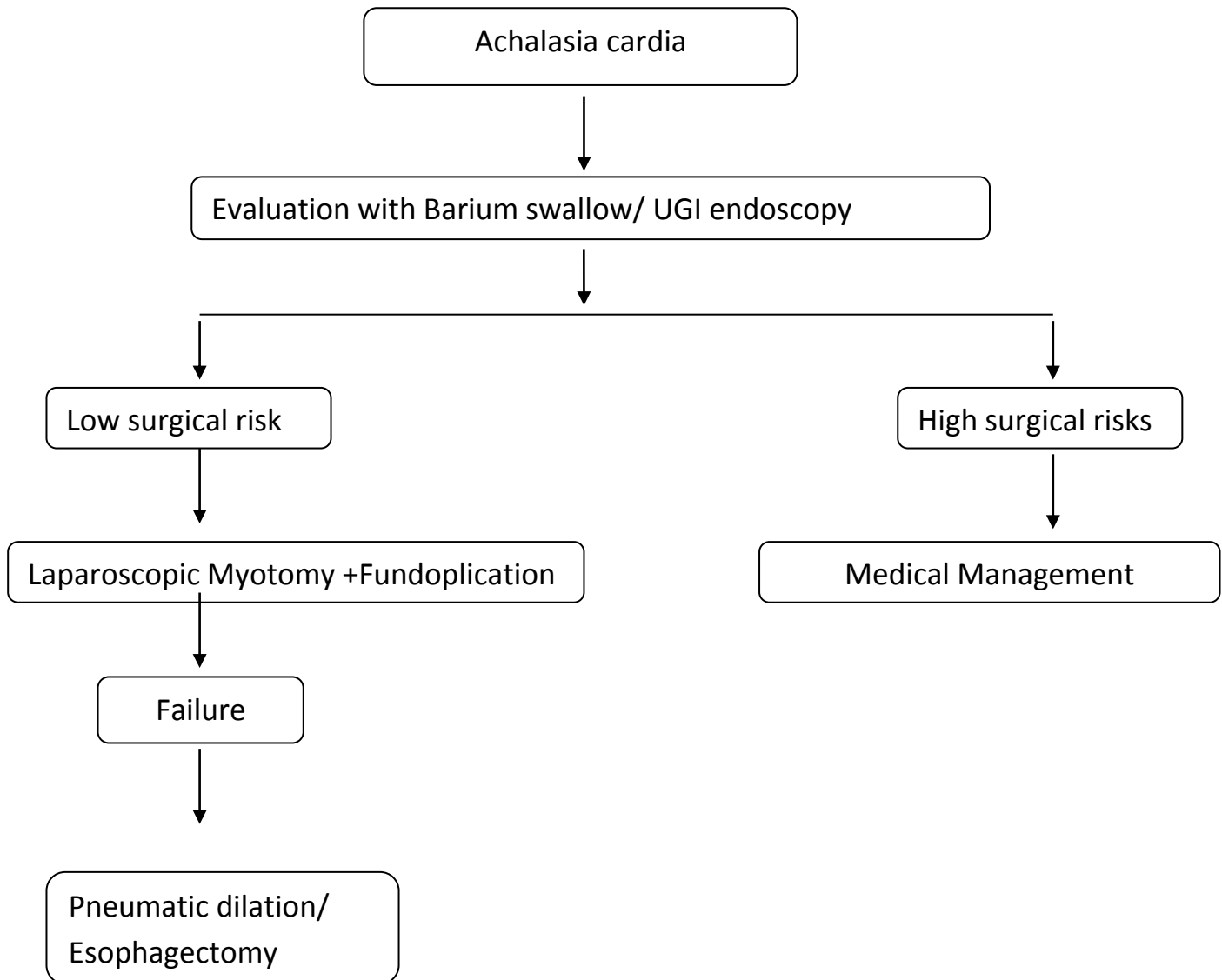
(An Institution of National Importance under the Ministry of Health & Family Welfare,
Government of India.)

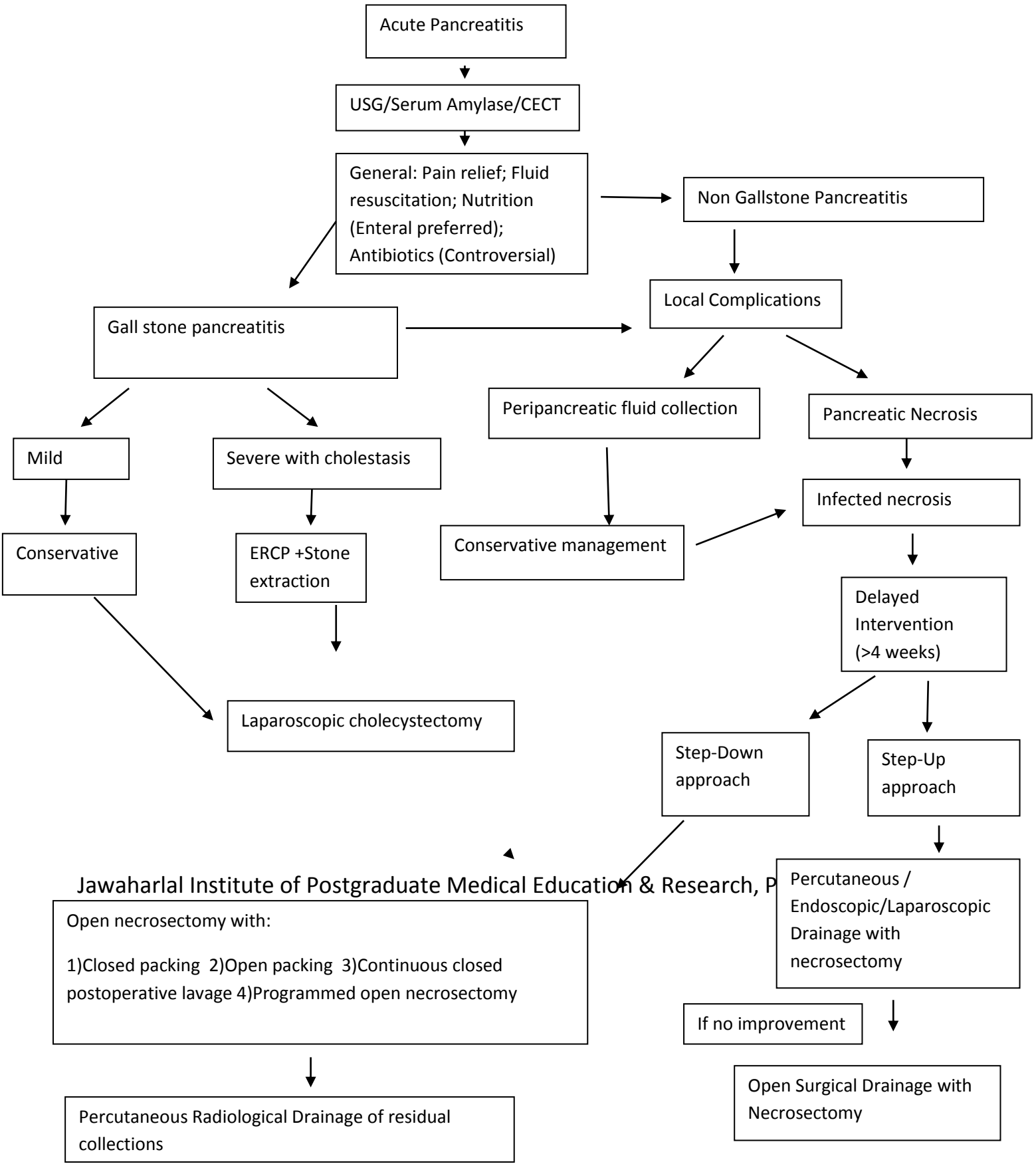
DEPARTMENT OF SURGICAL GASTROENTEROLOGY

**STANDARD OPERATING
PROCEDURES (SOPs) FOR
DISEASES**

Department of Surgical Gastroenterology
Standard Operating Procedure for Achalasia cardia

SGE, JIPMER, India





Open necrosectomy with:
1)Closed packing 2)Open packing 3)Continuous closed postoperative lavage 4)Programmed open necrosectomy

Percutaneous / Endoscopic/Laparoscopic Drainage with necrosectomy

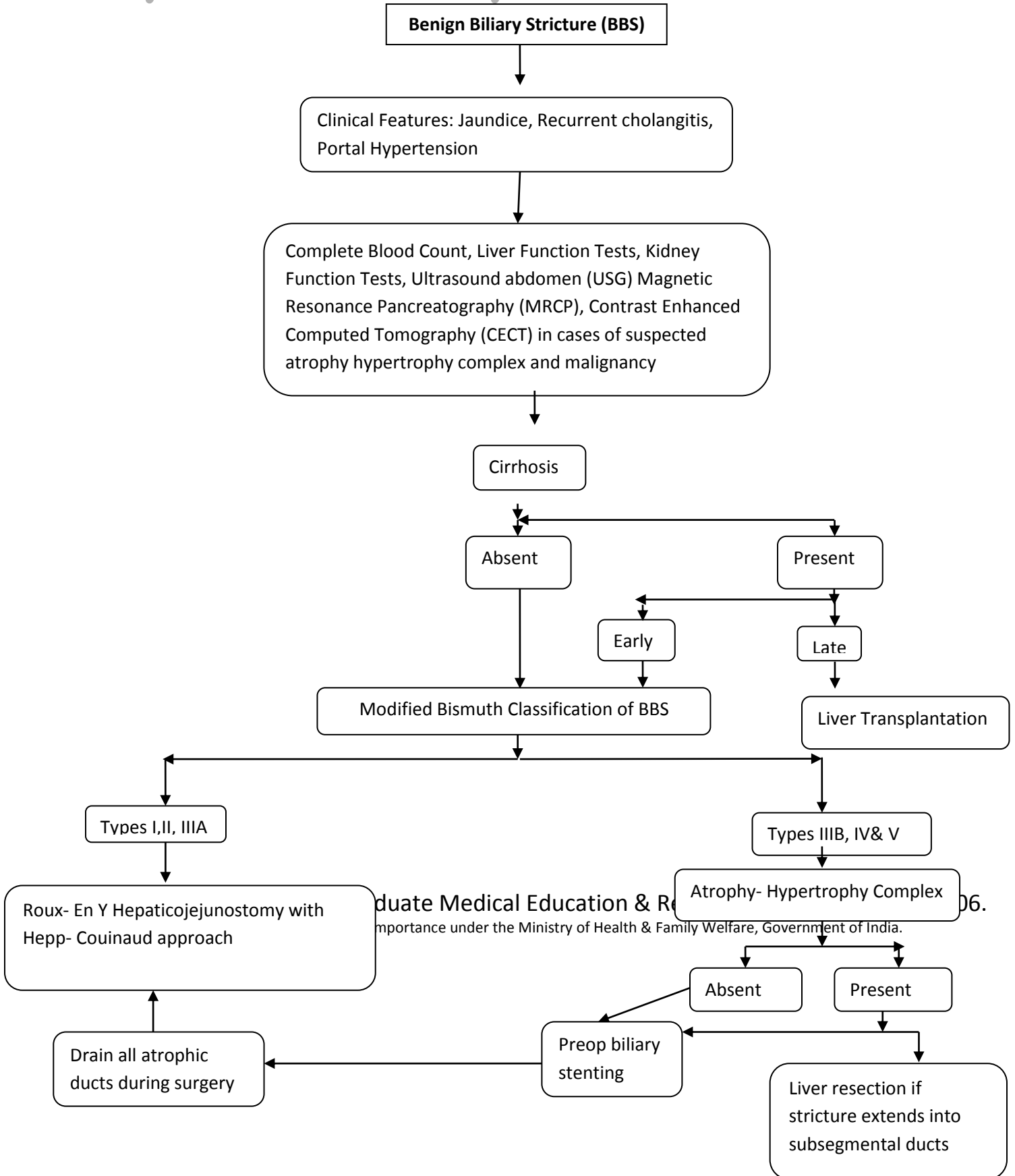
If no improvement

Open Surgical Drainage with Necrosectomy

Percutaneous Radiological Drainage of residual collections

Standard Operating Procedure for Benign Biliary Stricture (BBS)

SGE, JIPMER, India



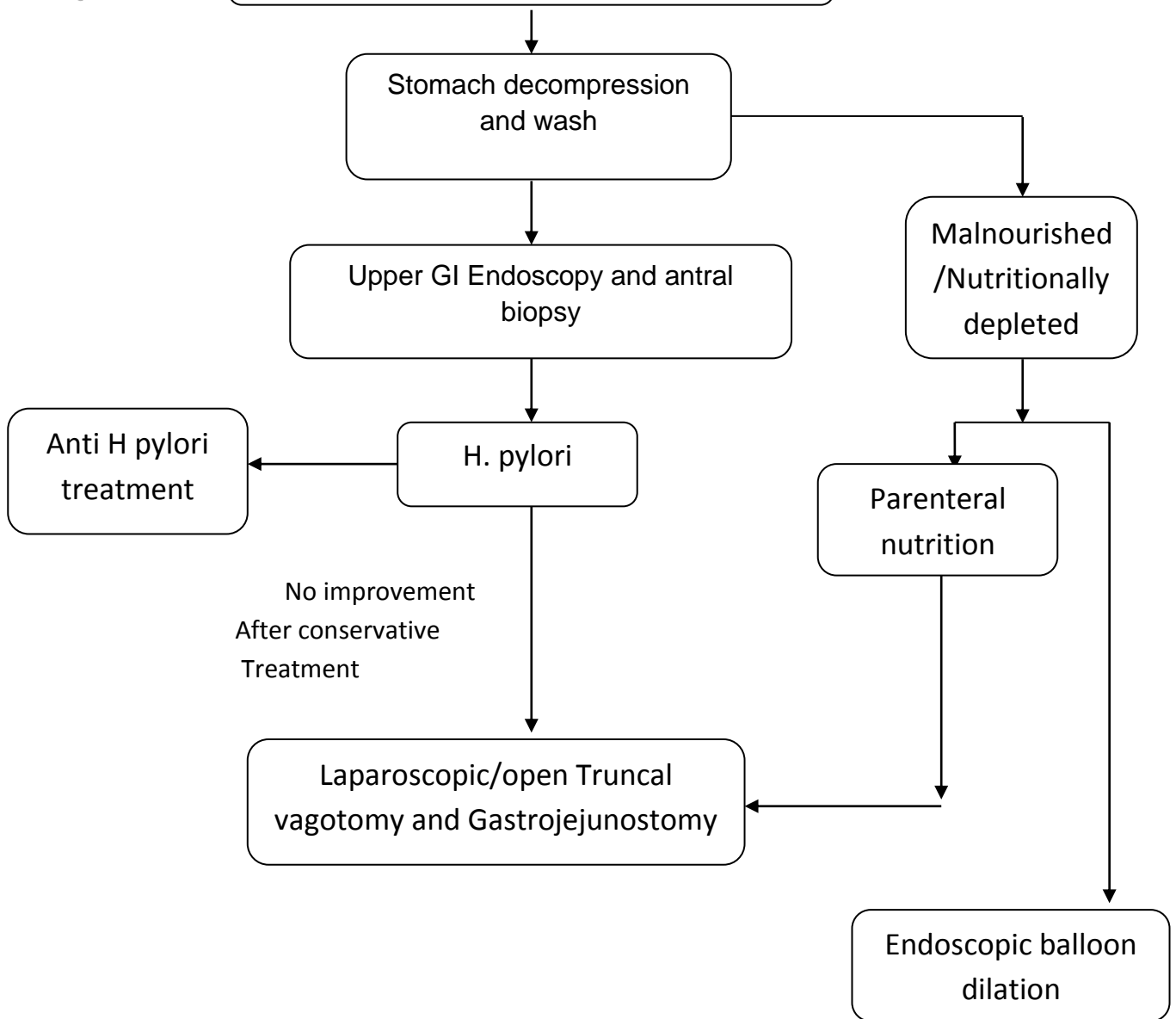
Department of Surgical Gastroenterology
Standard Operating Procedure for Benign Gastric Outlet Obstruction

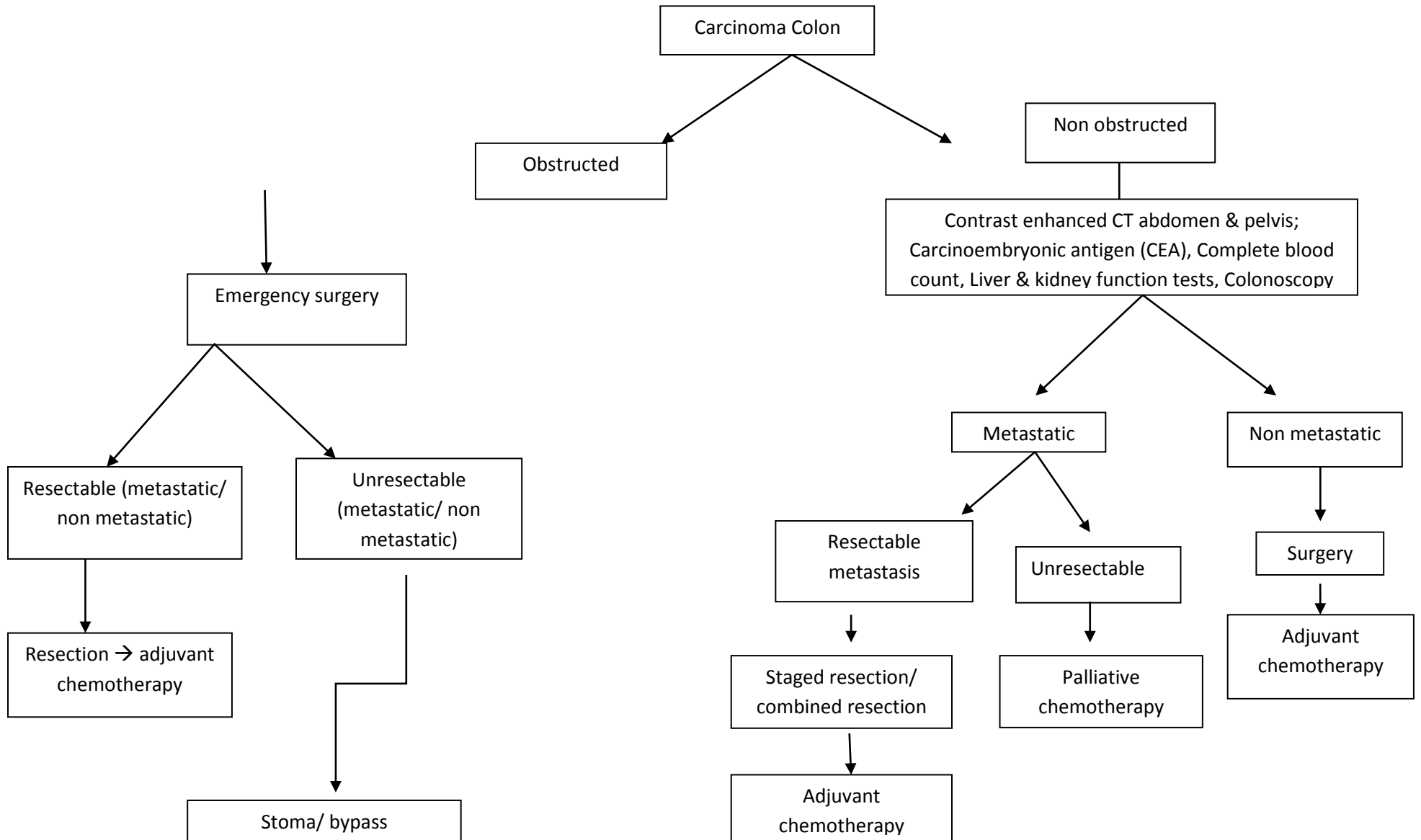
SGE,

J

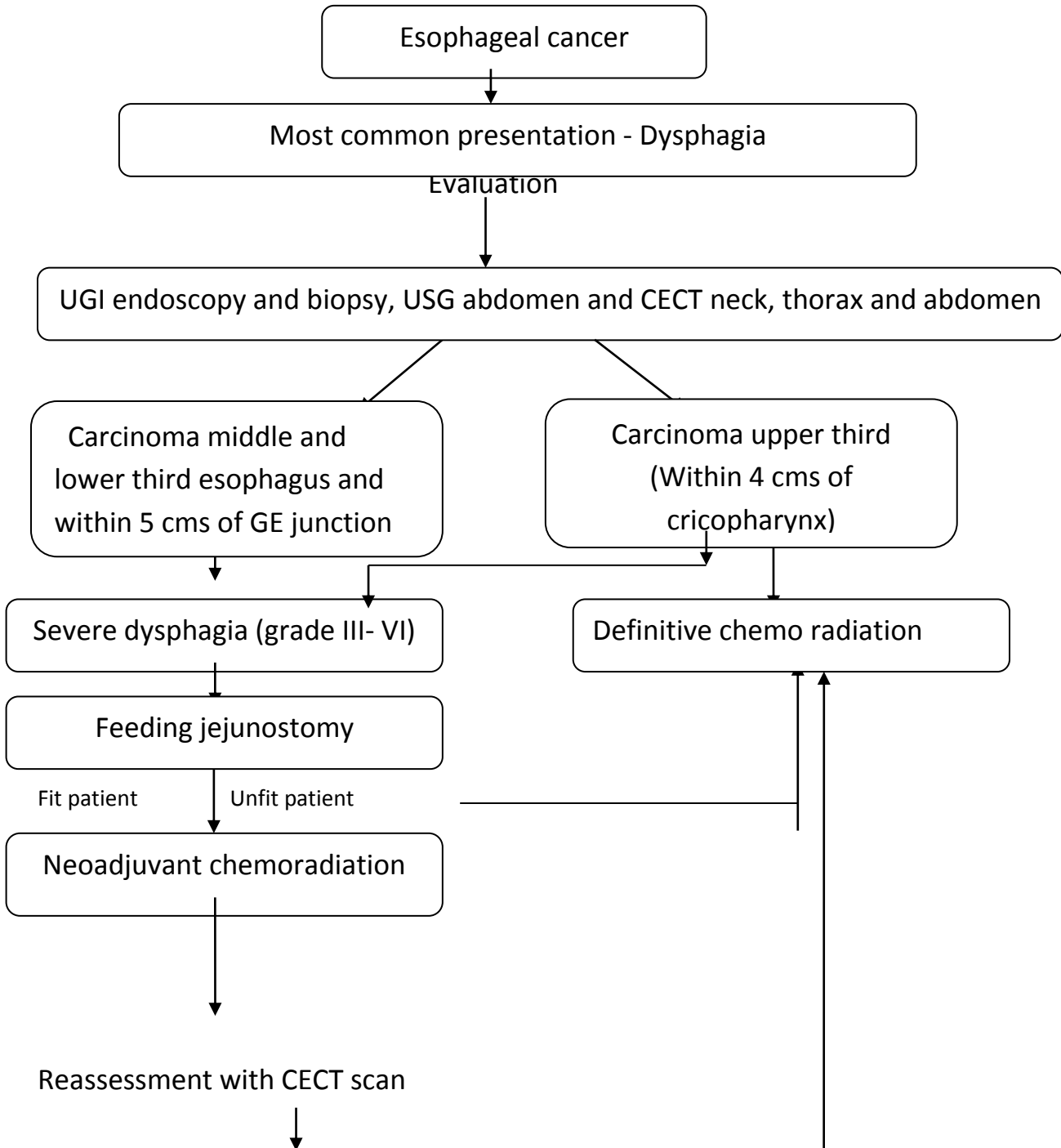
Benign Gastric Outlet Obstruction (GOO)

a





SGE, JIPMER, India



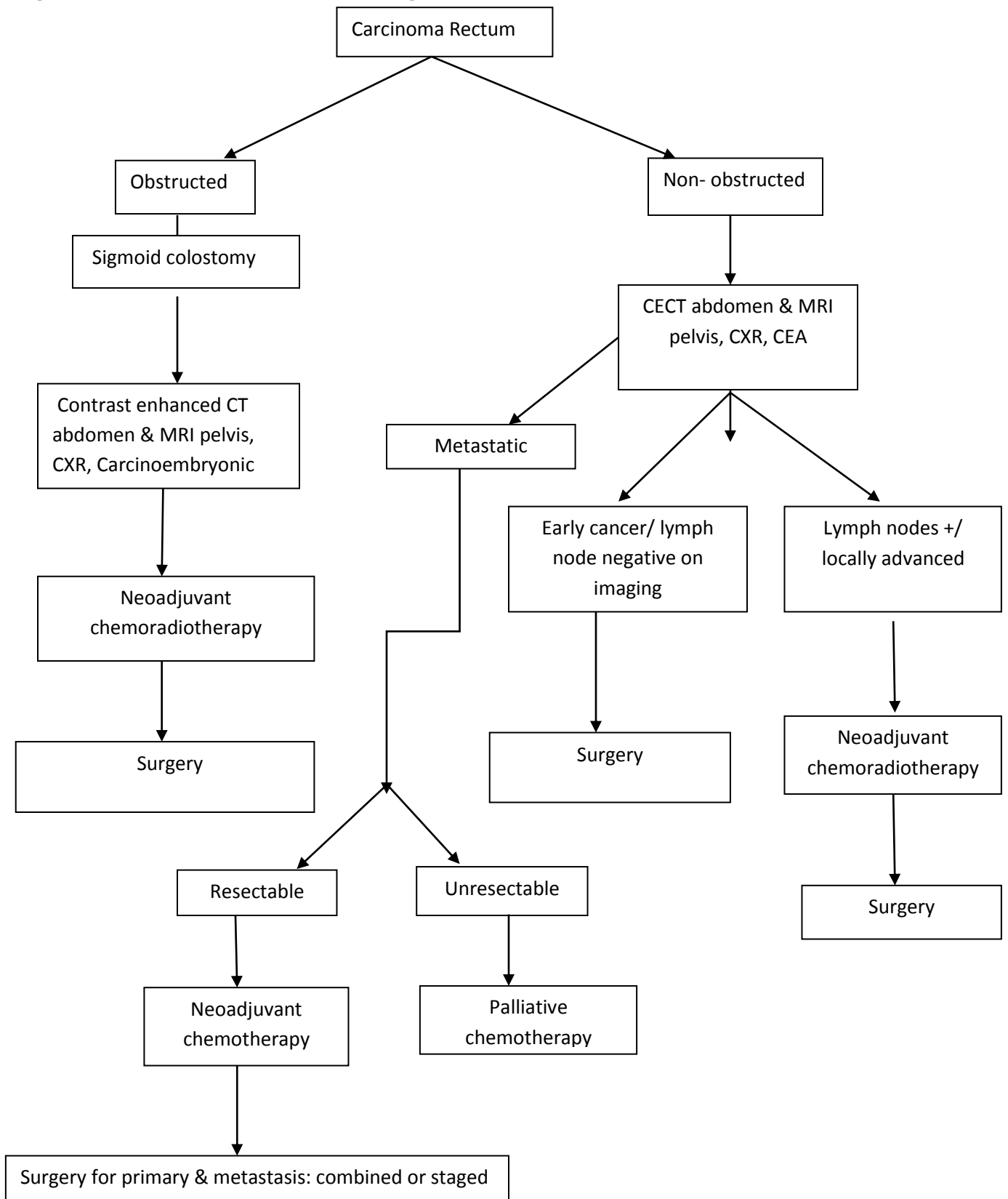
CT 1-3/ N 0-1, MO T4, N2-3, M1

Esophagectomy

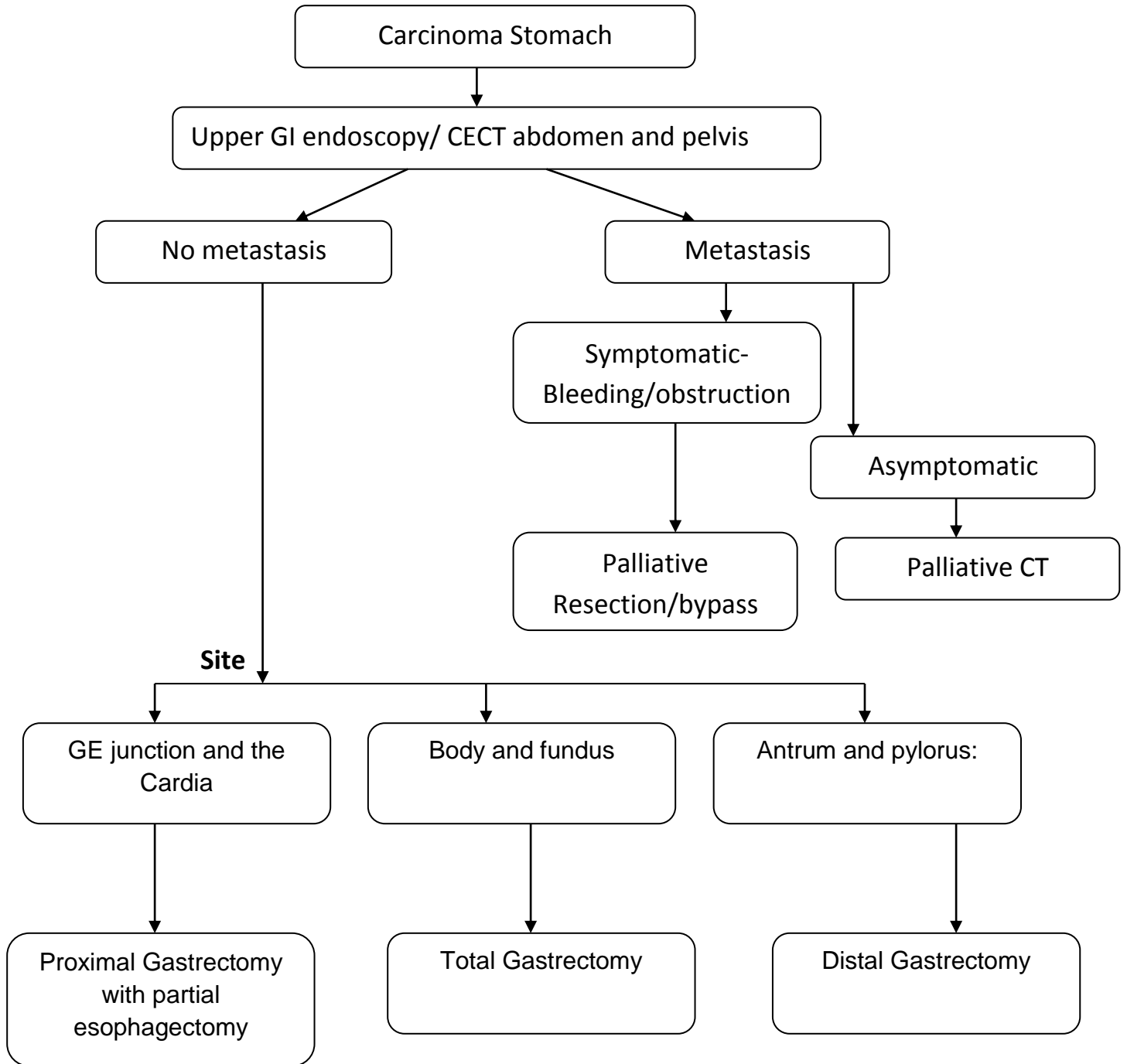
SGE R, India

Department of Surgical Gastroenterology
Standard Operating Procedure for Carcinoma Rectum

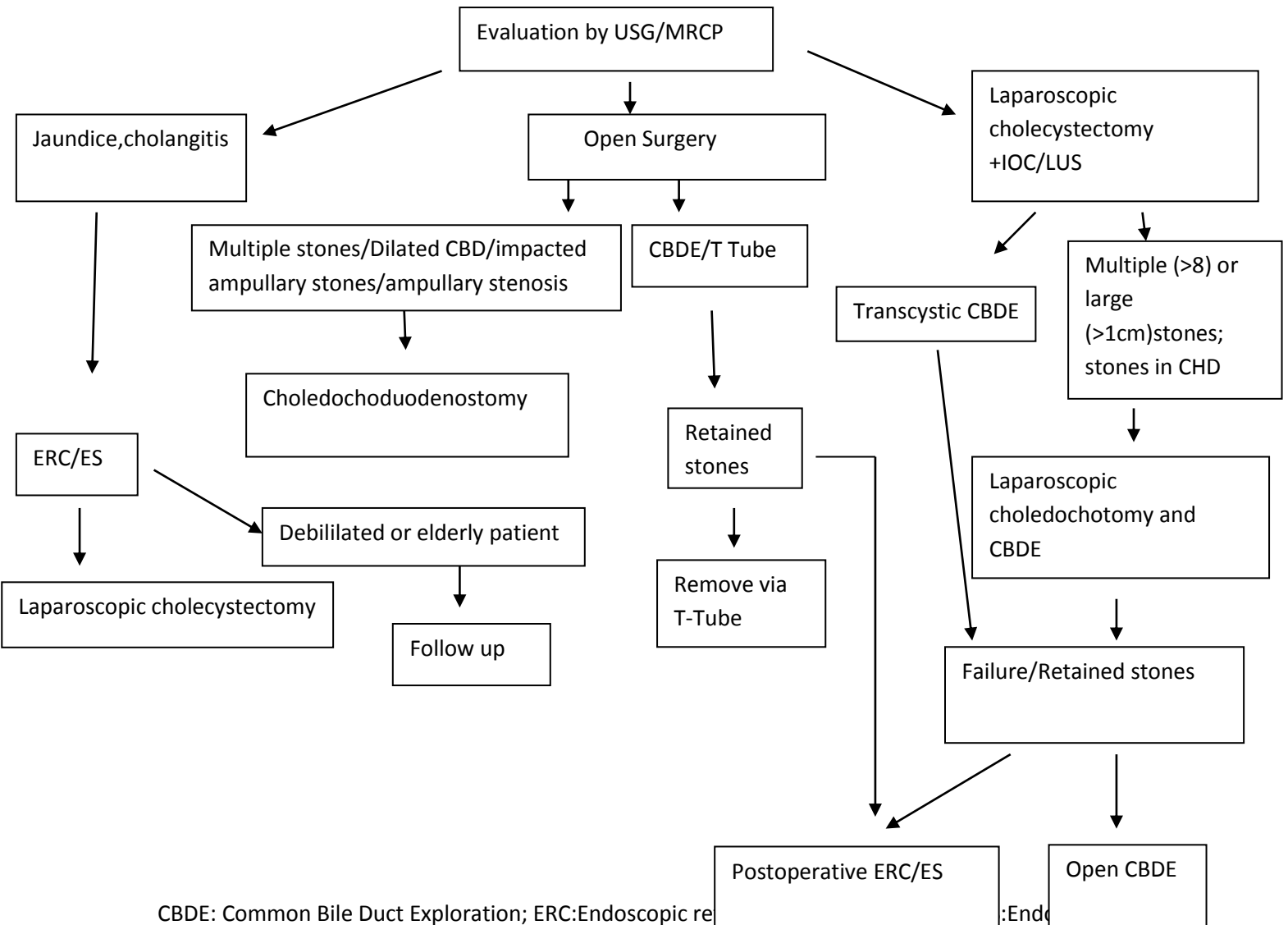
SGE, JIPMER, India



SGE, JIPMER, India

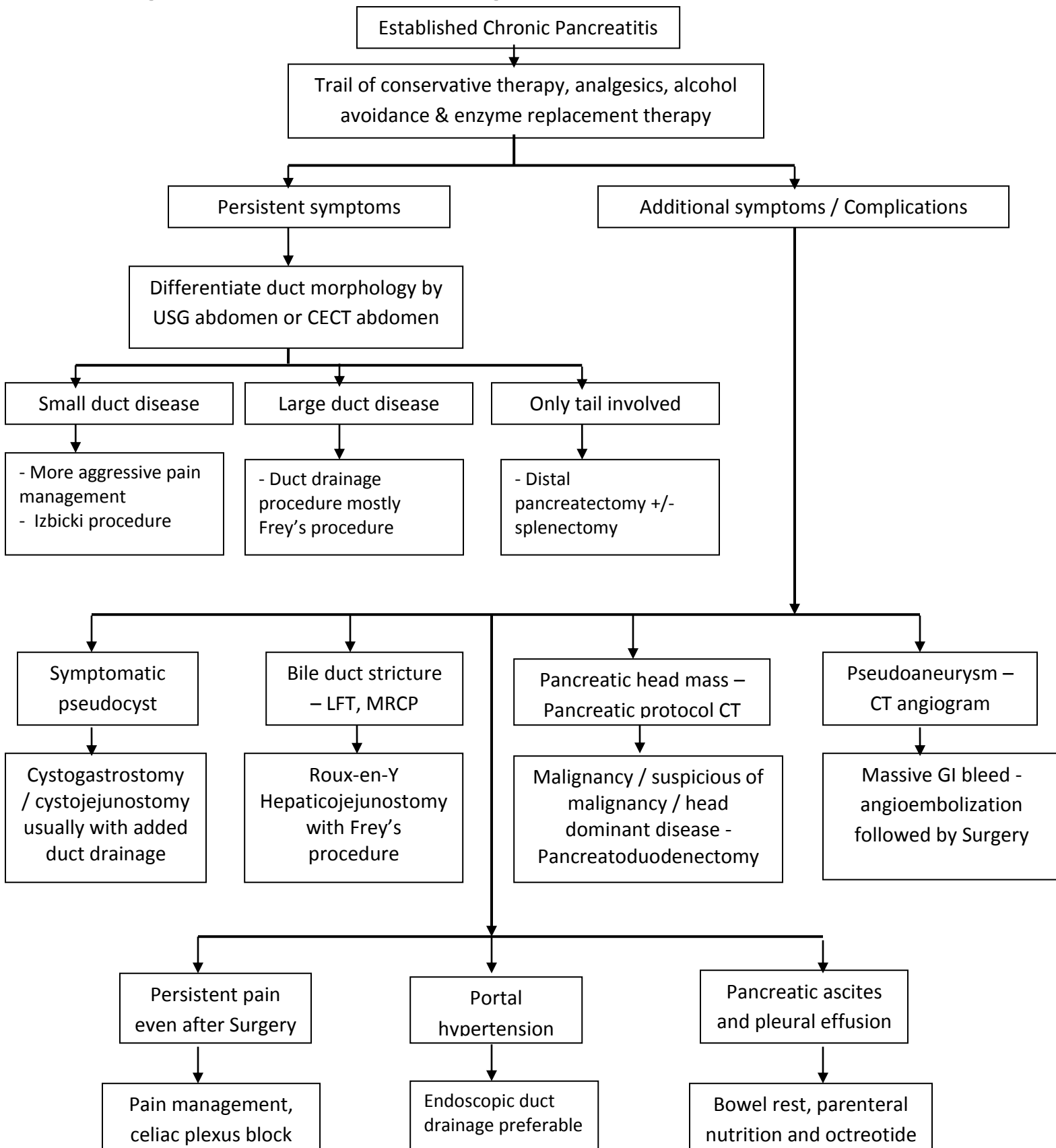


Choledocholithiasis +Cholelithiasis



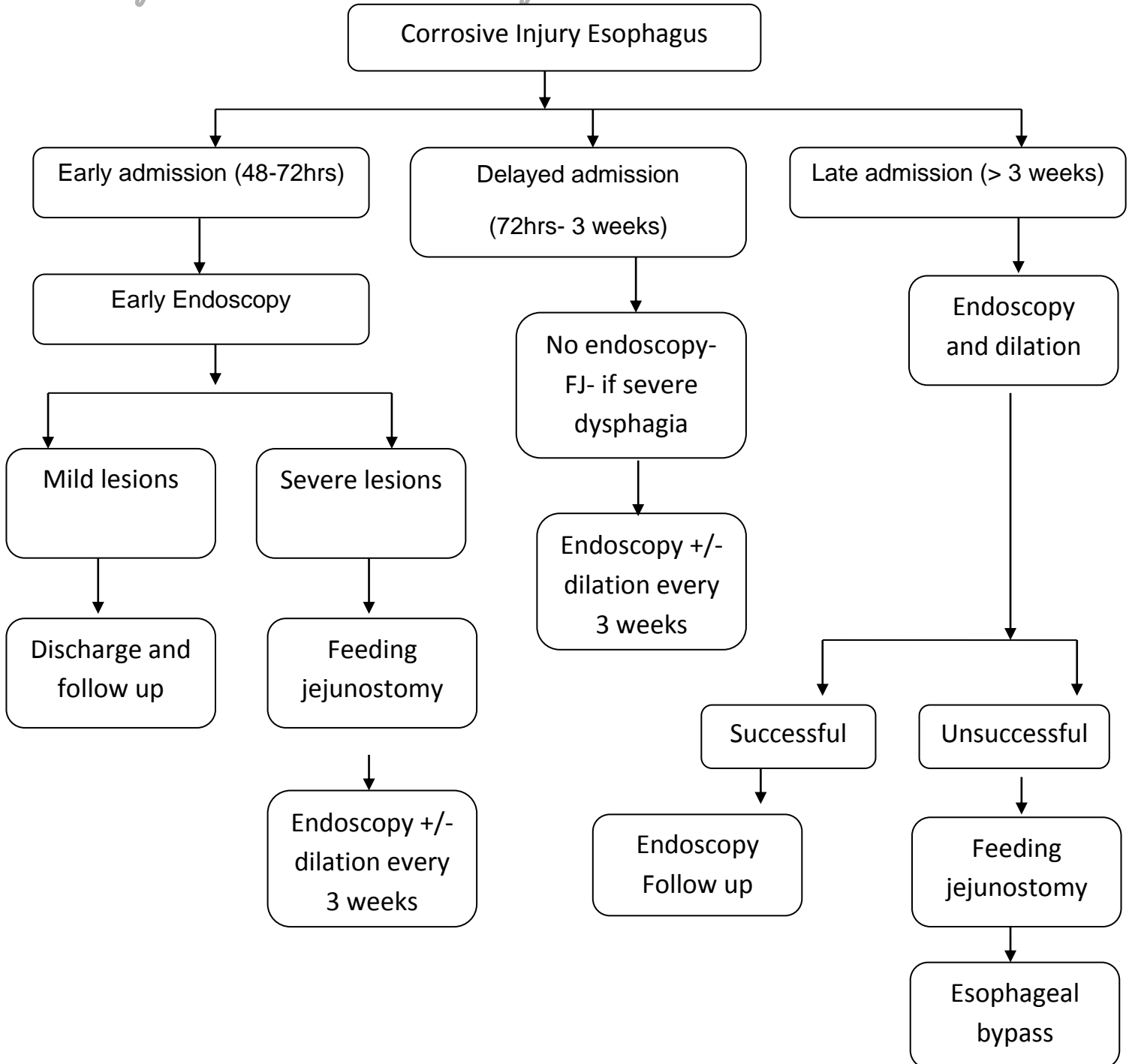
CBDE: Common Bile Duct Exploration; ERC:Endoscopic re:Endo
Sphincterotomy; CHD: Common Hepatic Duct; IOC: Intraoperative cholangiography; LUS: Laparoscopic
Ultrasound

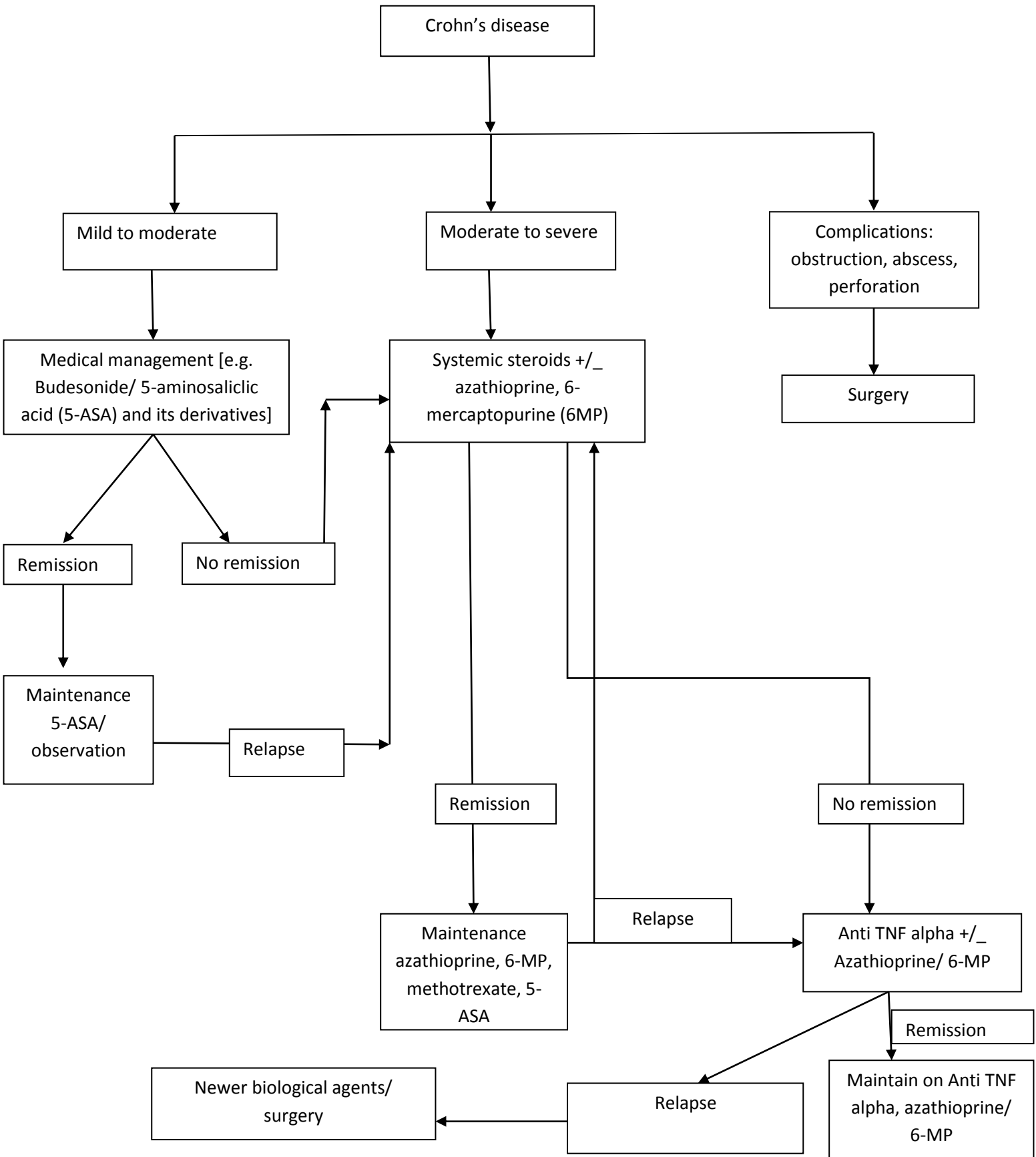
Department of Surgical Gastroenterology
Standard Operating Procedure for Chronic Pancreatitis



SGE,

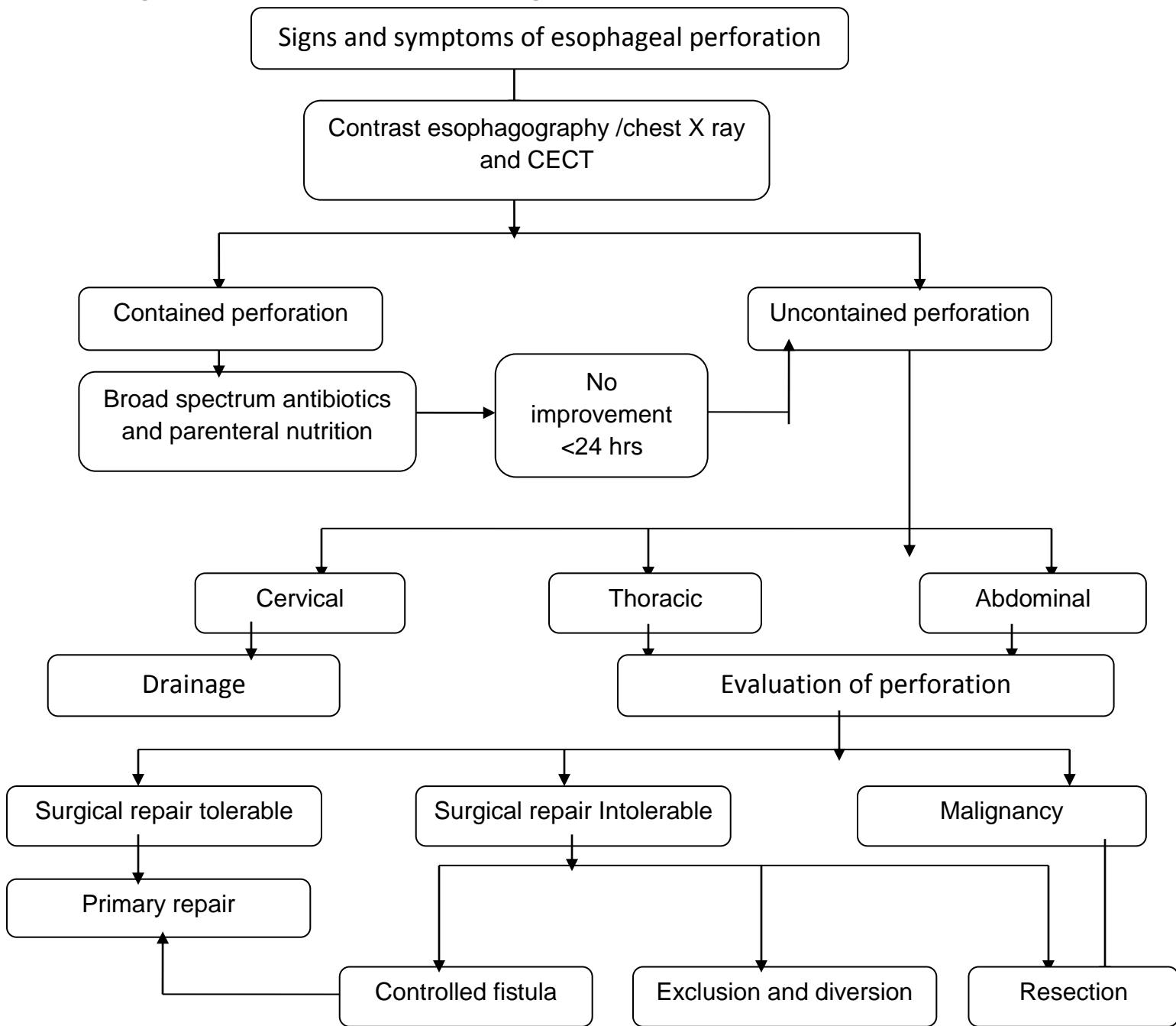
JIPMER, India

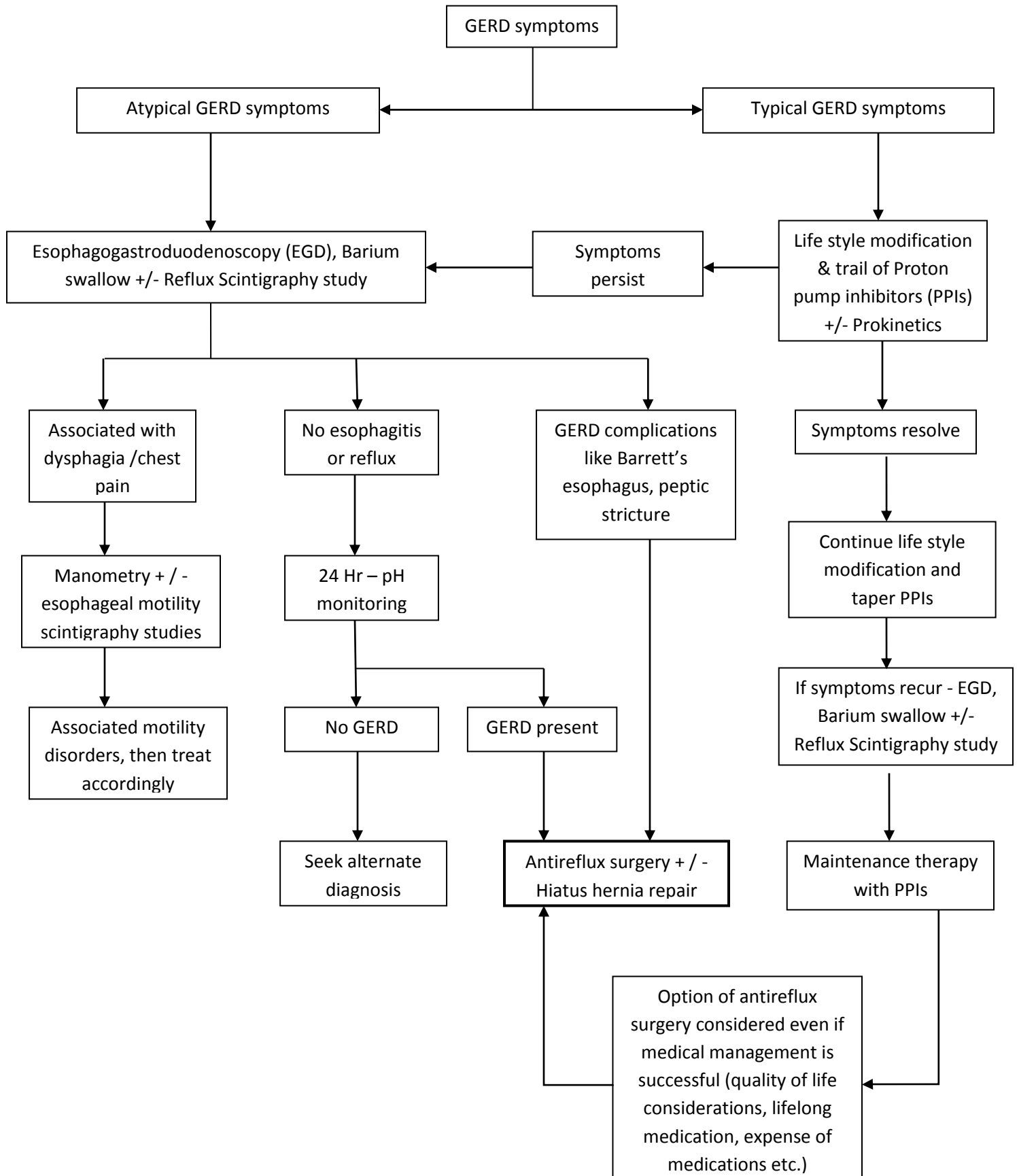


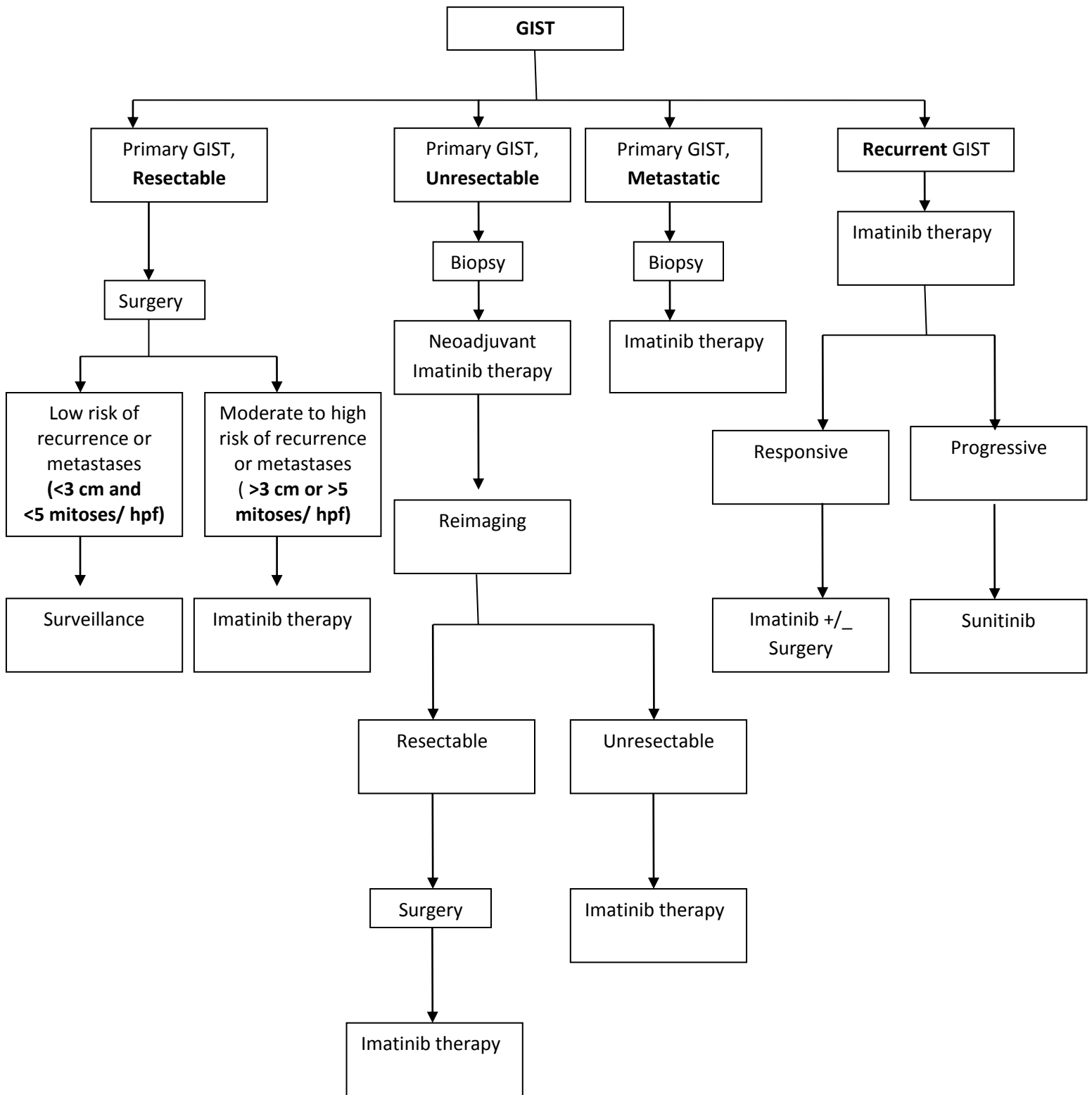


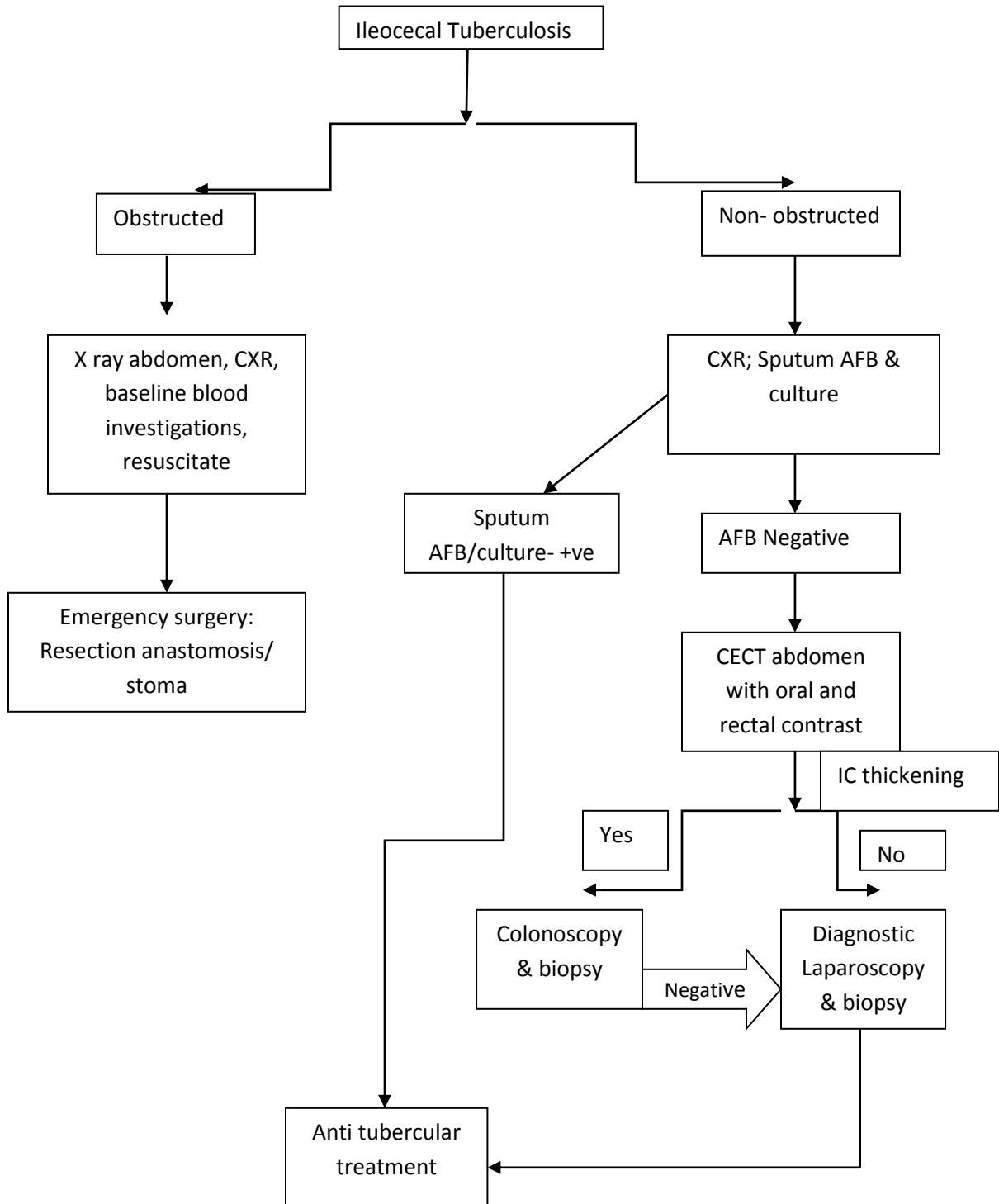
Department of Surgical Gastroenterology
Standard Operating Procedure for Esophageal Perforation

SGE, JIPMER, India

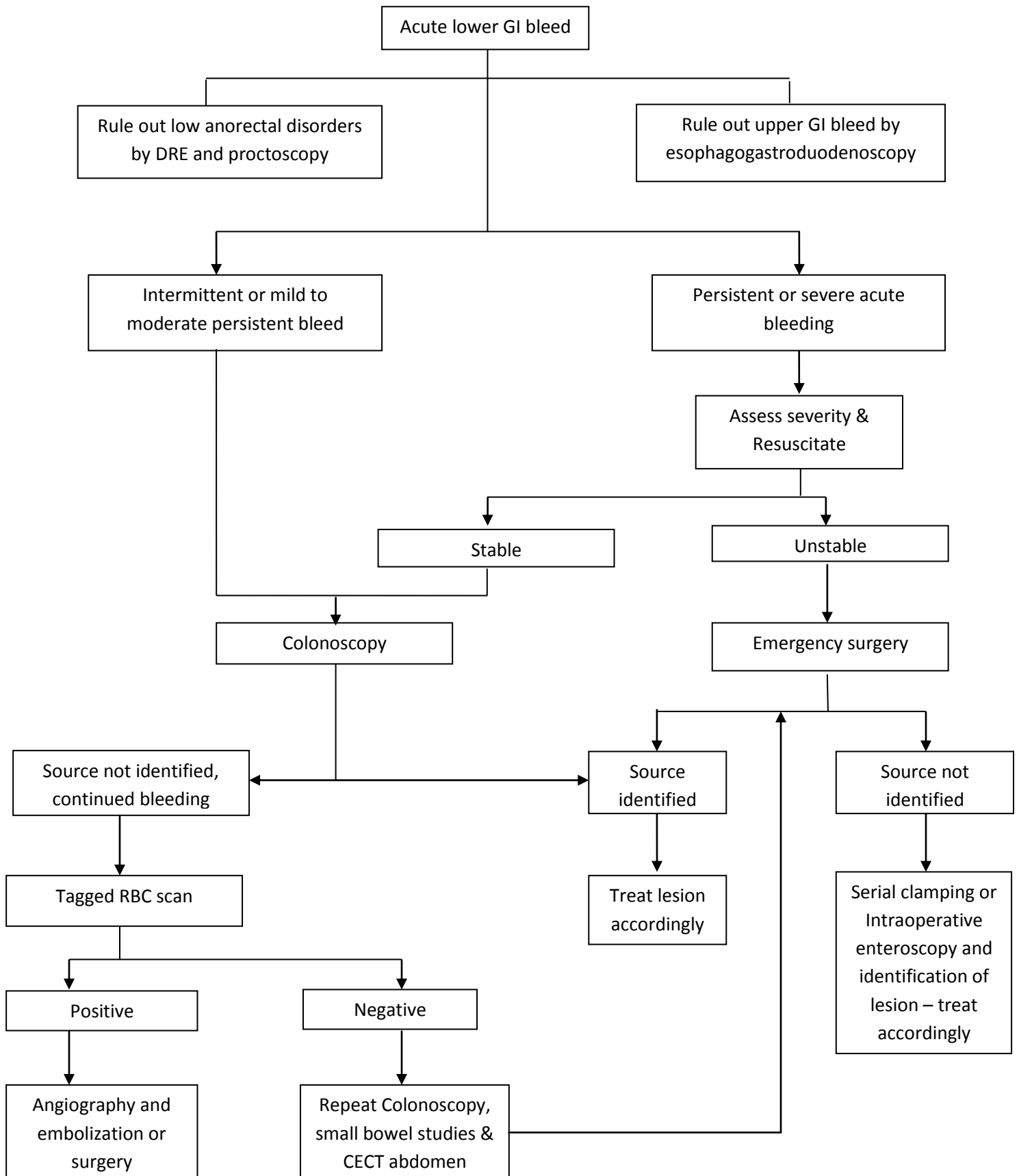


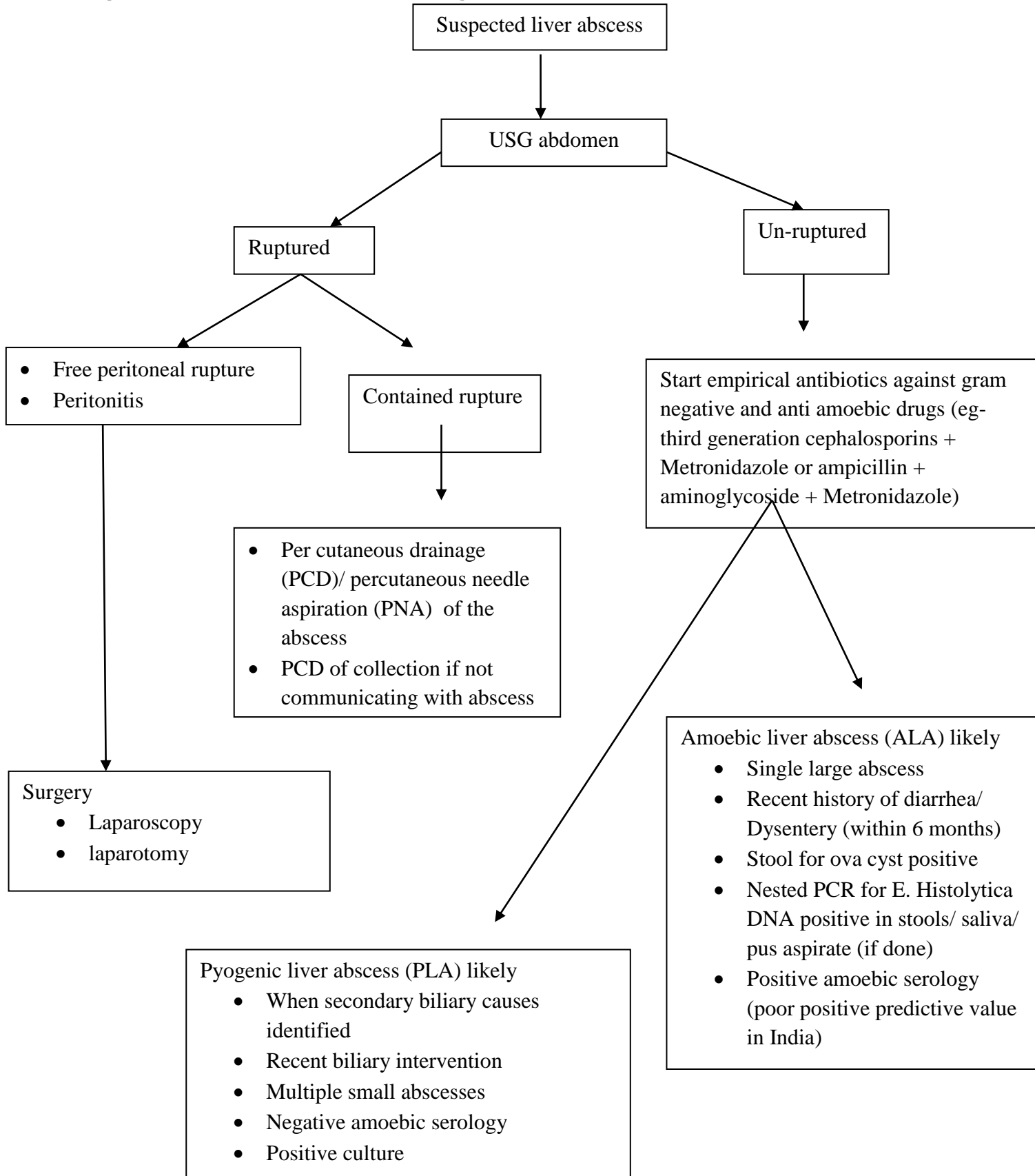




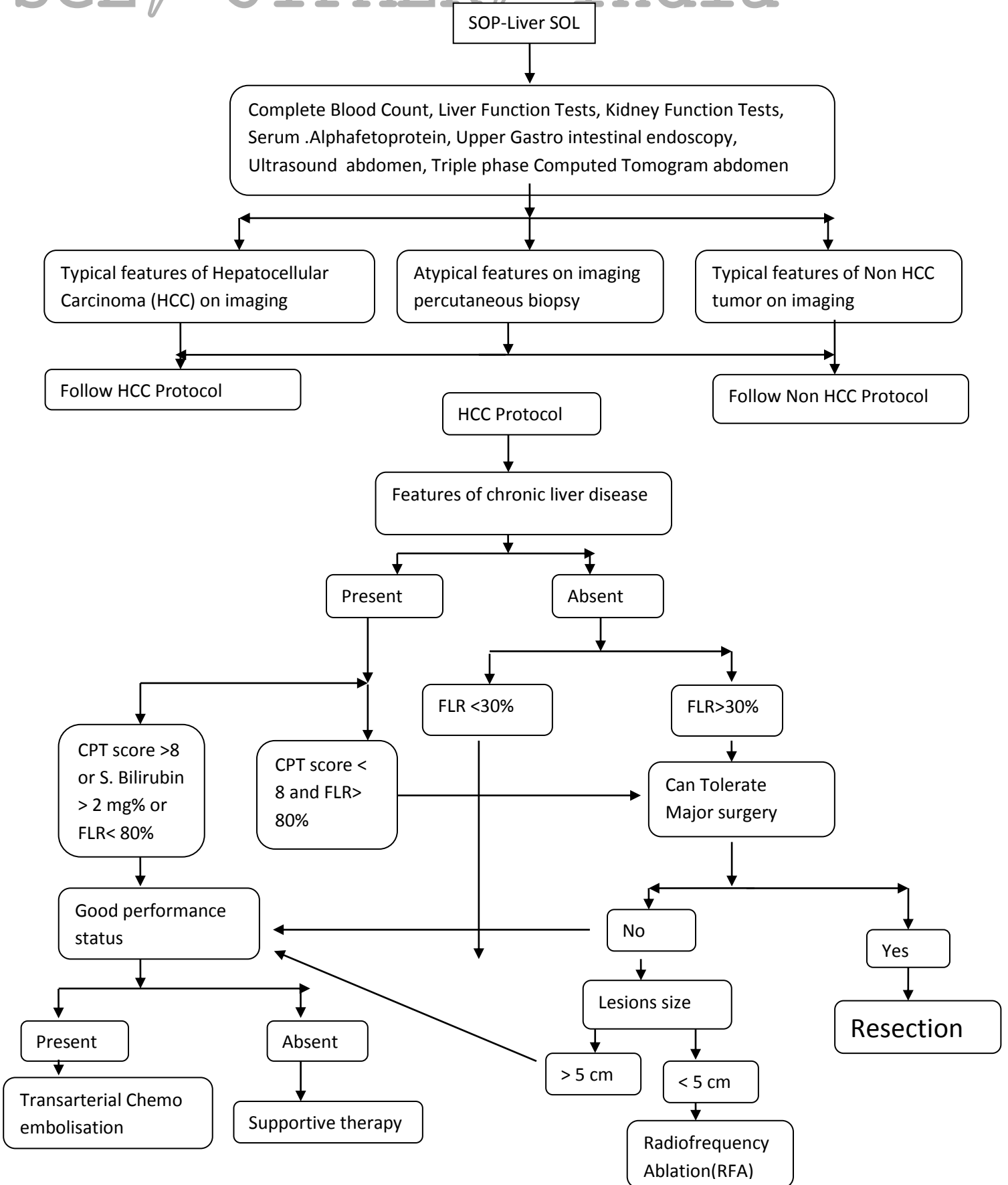


SGE, JIPMER, India



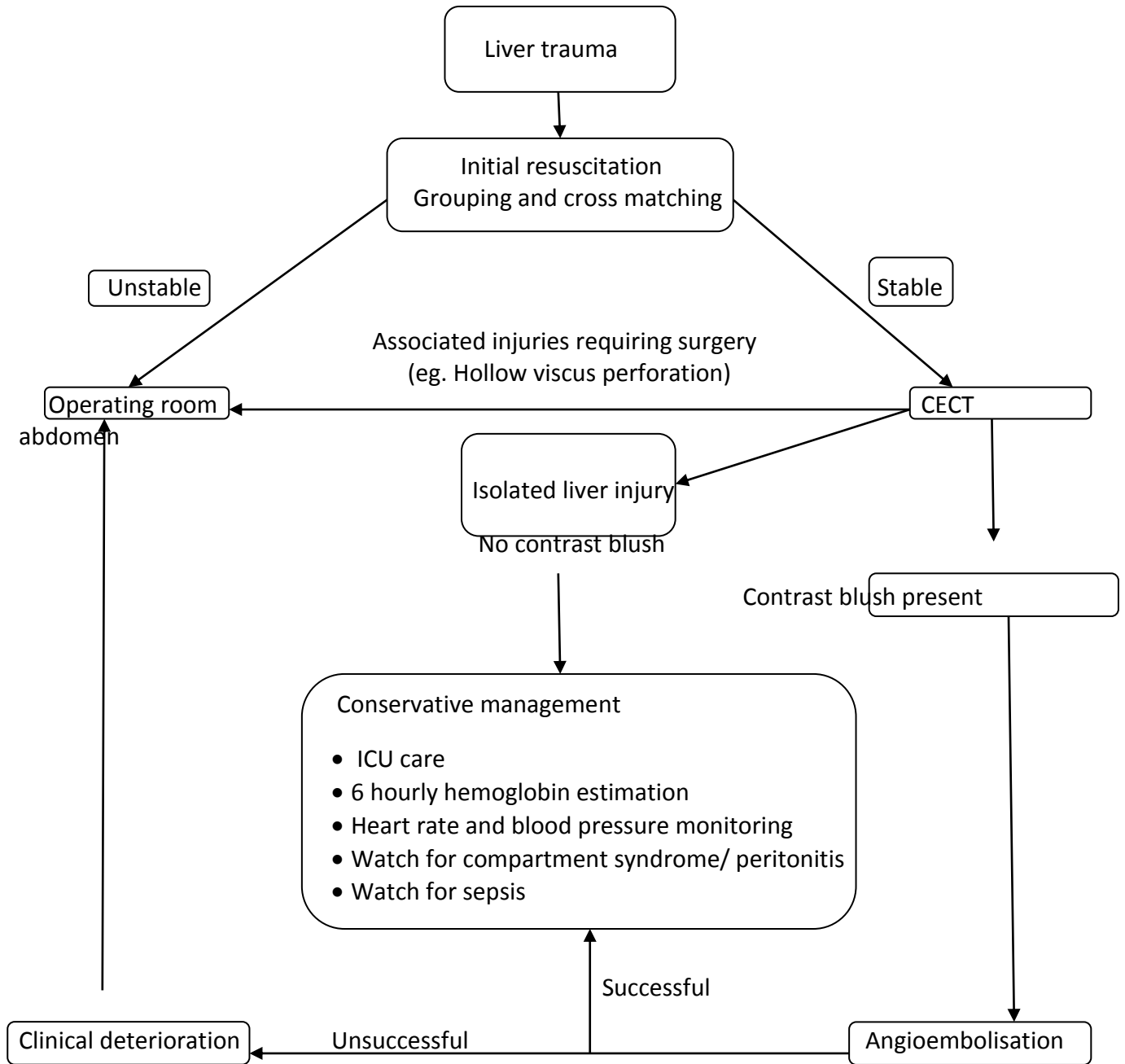


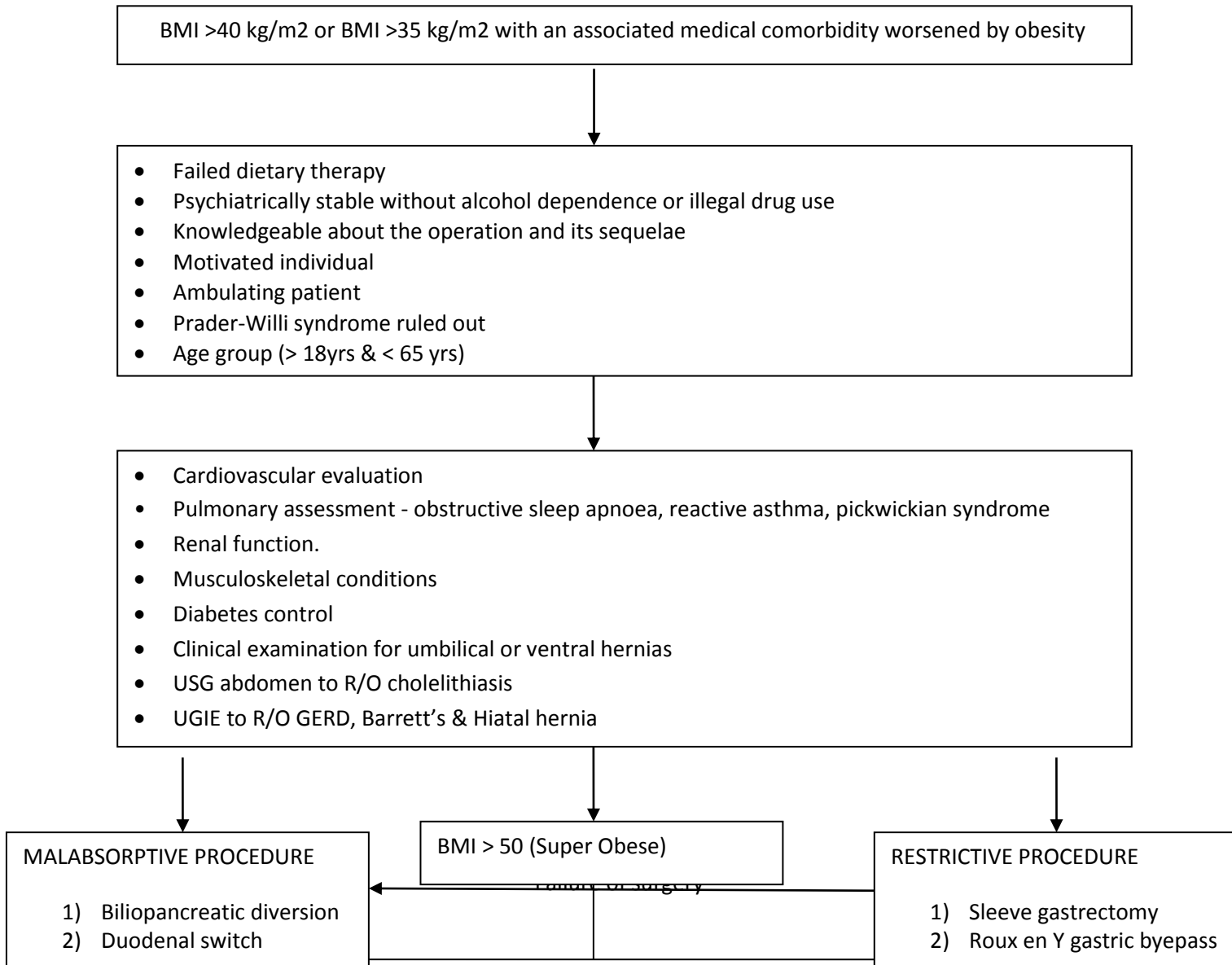
Standard Operating Procedure for Liver space occupying lesion (SOL)



Department of Surgical Gastroenterology
Standard Operating Procedure for Liver Trauma

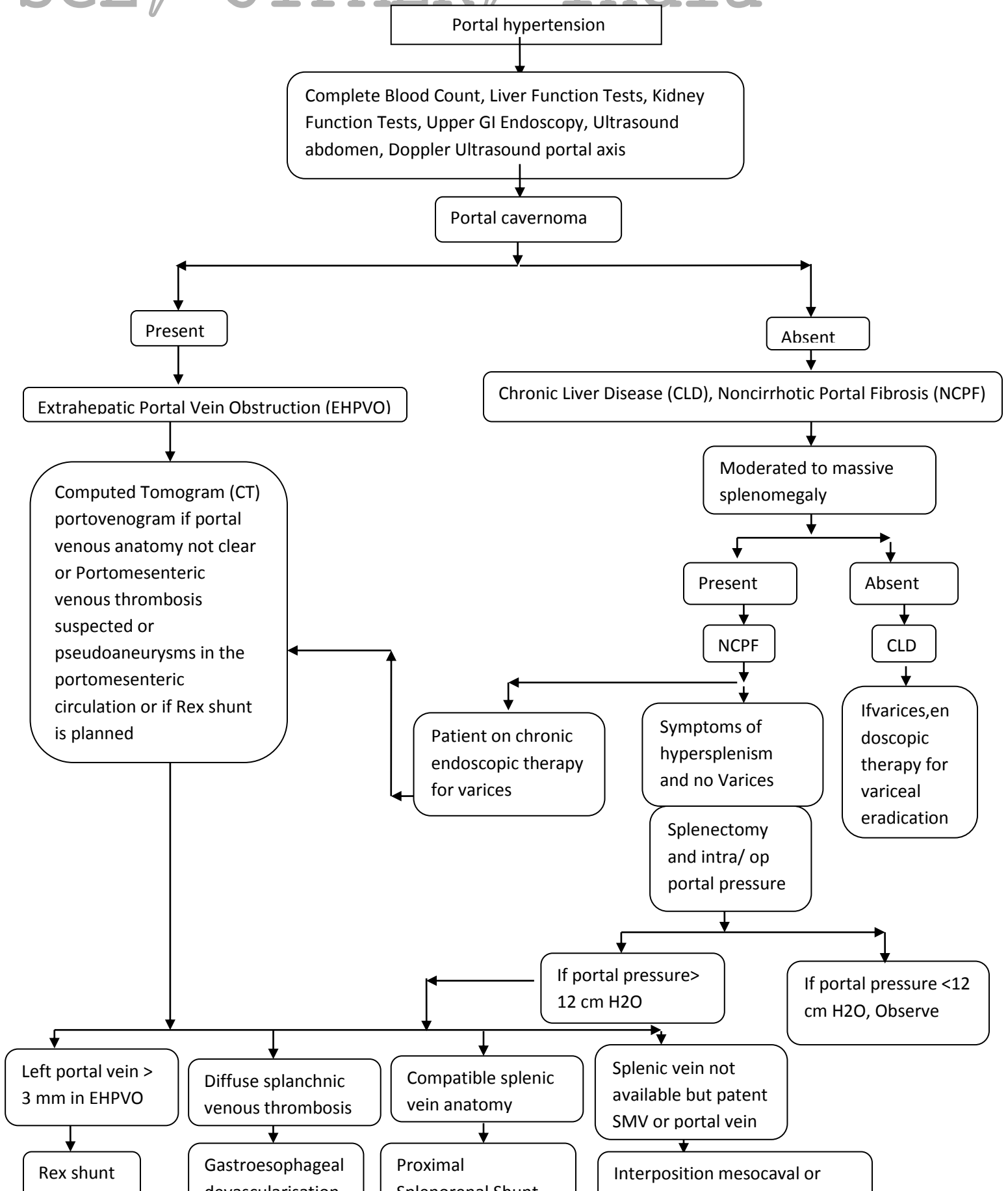
SGE, JIPMER, India





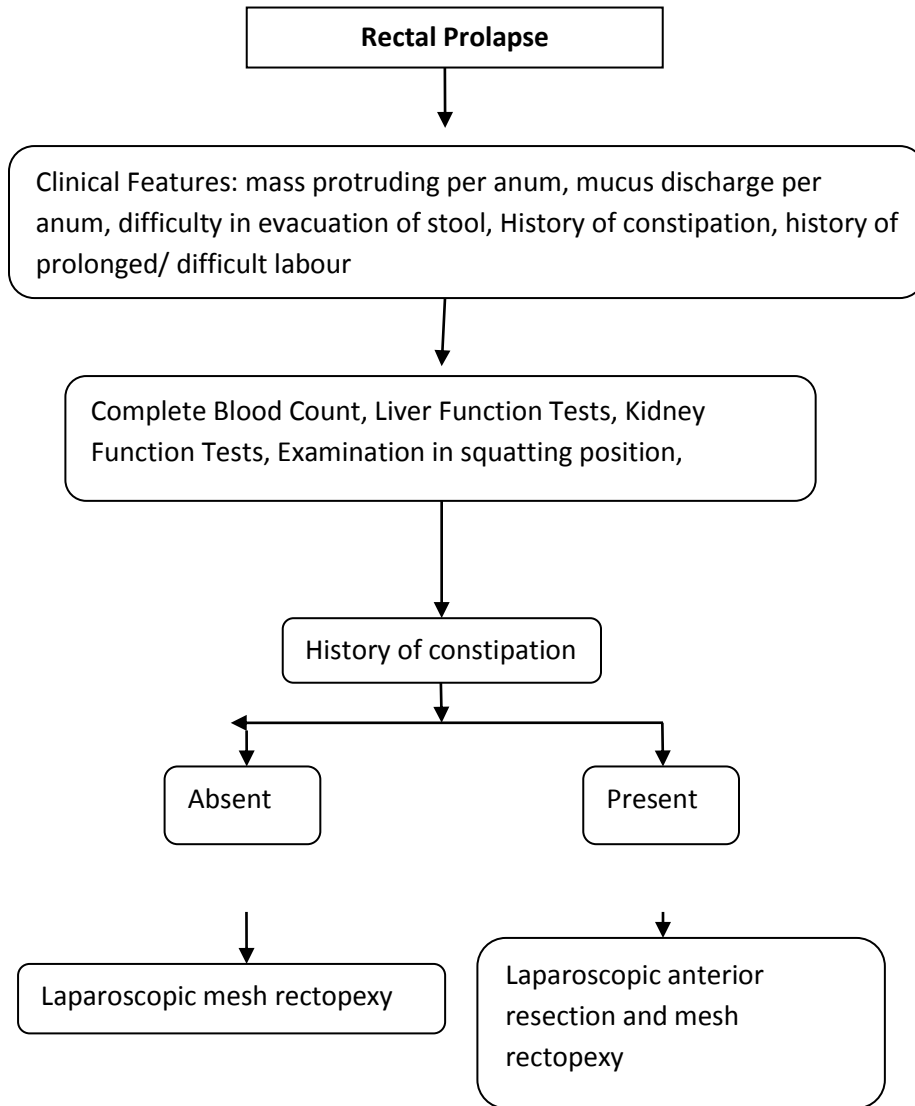
Standard Operating Procedure for Portal Hypertension

SGE, JIPMER, India

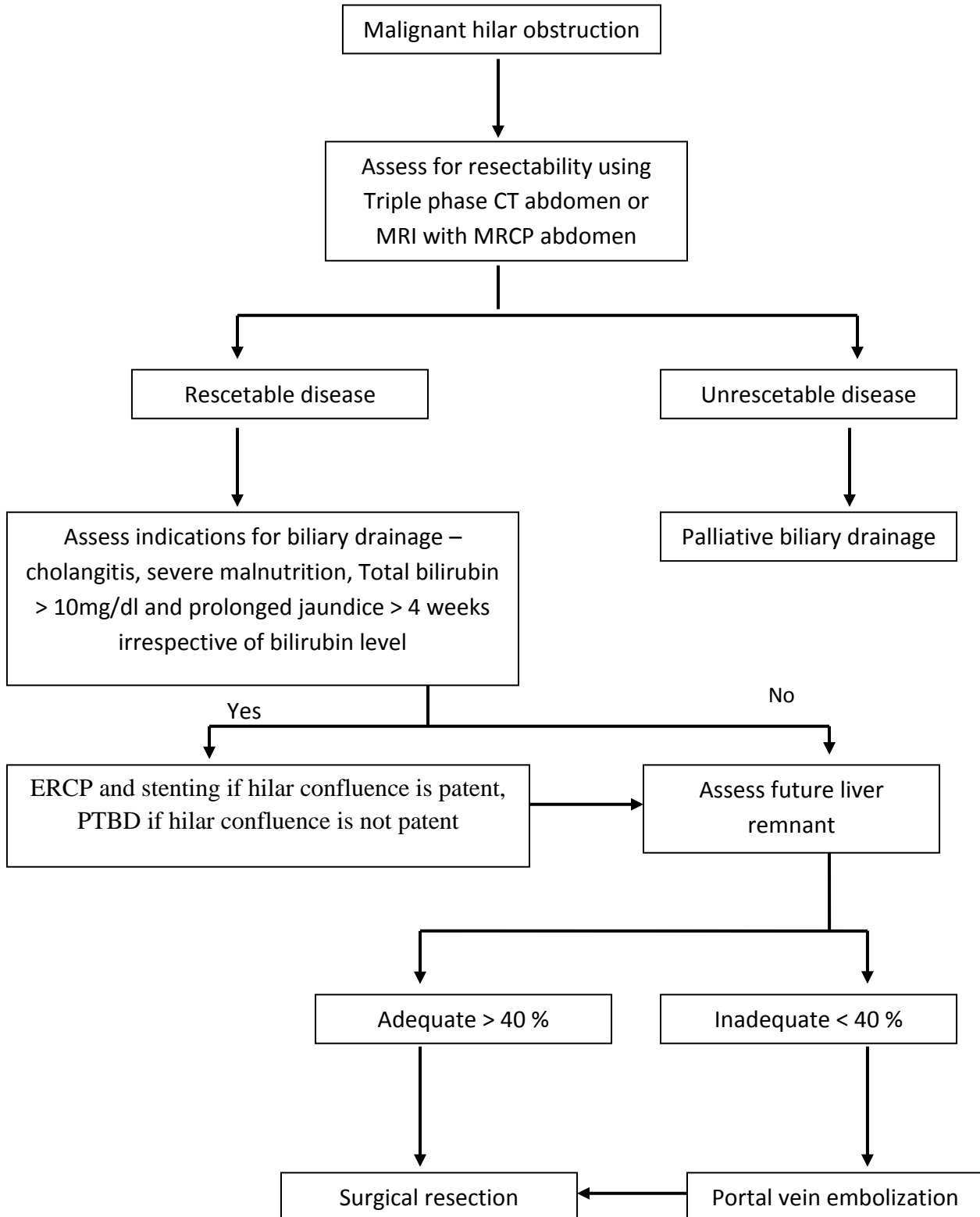


Department of Surgical Gastroenterology
Standard Operating Procedure for Rectal Prolapse

SGE, JIPMER, India



Standard Operative Procedure for Malignant hilar obstruction



Standard Operative Procedure for Malignant lower end obstruction

