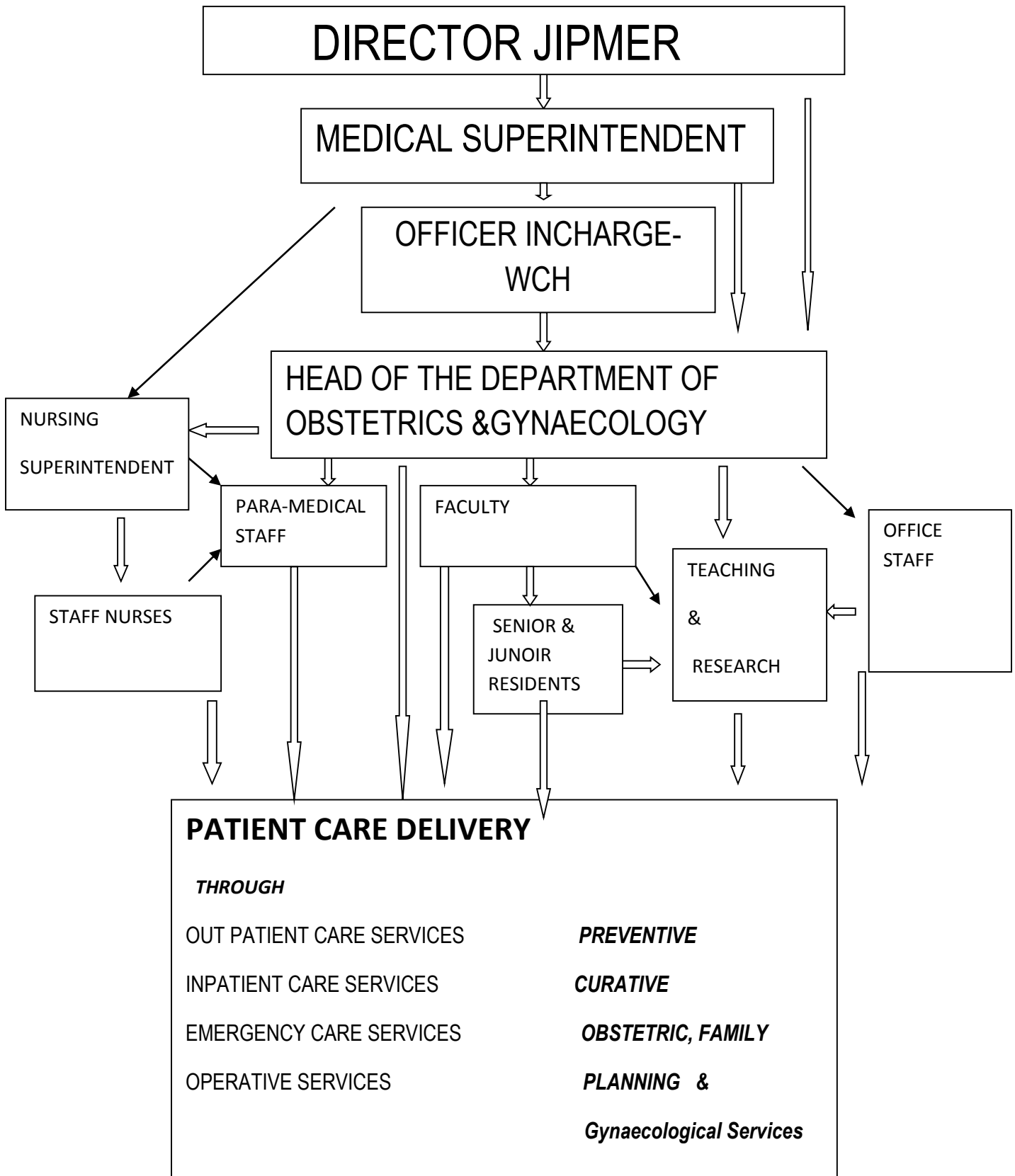


ORGANOGRAM



ORGANOGRAM – CARE OF PATIENTS (COP)

All units are led by Consultants of Professor Level

Each unit has 3 to 4 Consultants, 2 to 3 senior residents and 6 to 8 Postgraduates and a few Interns

Units	Admission/OPD days	OT days	Grand rounds days
I	Mondays & Alternate Fridays	Wednesdays & Alternate Fridays	Tuesdays & Alternate Saturdays
II	Tuesdays & Alternate Saturdays	Thursdays & Alternate Saturdays	Wednesdays & alternate Fridays
III	Wednesdays & Alternate Fridays	Mondays & Alternate Fridays	Tuesdays & Alternate Saturdays
IV	Thursdays & Alternate Saturdays	Tuesdays & alternate Saturdays	Wednesdays & alternate Fridays
Sunday emergency admissions on rotation of unit-24 hrs. coverage by The admission Unit faculty			
Unit faculty on their respective OPD days take call after 4.30 pm & manage all emergency cases of all units duty roster is followed in case of leave, they need to assign their responsibilities to their colleagues –same will be informed to the respective unit heads			